



ECUADOR'S PROVEN EXPLORER

- EXPLORING FOR GOLD AND COPPER PROJECTS
- ADVANCING HIGH-GRADE, HIGHLY-PROFITABLE VMS MINE CONSTRUCTION



PREFERRED LOCAL PARTNER.



CONSTRUCTION OF EL DOMO STARTED IN JANUARY 2025.



TARGET DEFINITION FOR HIGH GRADE GOLD AND COPPER.

DISCLAIMER

FORWARD - LOOKING INFORMATION

This presentation contains “forward-looking information” within the meaning of applicable Canadian securities laws. Forward-looking information is based on the beliefs, expectations and opinions of the management as of the date the statement is published, and assumes no obligation to update any forward-looking information, except as required by law. In certain cases, forward-looking statements can be identified by the use of words such as “plans”, “expects”, “outlook”, “guidance”, “budget”, “scheduled”, “estimates”, “forecasts”, “intends”, “anticipates” or “believes”, or variations of such words and phrases or statements that certain actions, events or results “may”, “could”, “would”, “might”, “will be taken”, “occur” or “be achieved” or the negative of these terms or comparable terminology.

Forward-looking information relates to future events or future performance and reflects Salazar Resources Ltd.’s (or the “Company”) management’s expectations or beliefs regarding future events including, but not limited to, statements and information related to the results of the feasibility study and updated Mineral Reserves for El Domo, including the forecasted economics of the Curipamba project, expected gold, silver, copper and zinc production (and the grade of such gold, silver, copper and zinc production) from the Curipamba project and projected operating and capital costs associated with the Partner’s planned operations at the Curipamba project, and the Proven and Probable reserves of gold, silver, copper and zinc; statements and information related to the results of the PEA, including the forecasted economics and the additional indicated and inferred gold, silver, copper and zinc resources; statements and information relating to the mining process; the projected taxes and LOM royalties to the Ecuadorian government; the 2% NSR royalty payable to Altius Mining Corporation; statements and information relating to the ESIA; statements and information relating to the discussions regarding the non-equity financing; the estimated mine life of the project; gold, silver, copper and zinc price assumptions; exchange rate assumptions; the merits of the Curipamba project; mineral exploration activities in the Rumiñahui, Osos, Santos, Potro, Macara, Pijili and Santiago projects; and other statements regarding future plans, expectations, guidance, projections, objectives, estimates and forecasts, as well as statements as to management’s expectations with respect to such matters.

Forward-looking statements are necessarily based upon estimates and assumptions, which are inherently subject to significant business, economic and competitive uncertainties and contingencies, many of which are beyond the Company’s control and many of which, regarding future business decisions, are subject to change. Assumptions underlying the Company’s expectations regarding forward-looking statements or information contained in this presentation include, but are not limited to, the Company will be able to accomplish its plans and objectives with respect to the FS, PEA, ESIA and the Curipamba project on the expected timeline; market fundamentals will accord with the estimates and assumptions contained in the FS and PEA; the receipt of any necessary approvals and consents in connection with the development of the Curipamba project in a timely manner; that the cost estimates presented in the FS and PEA are representative of the actual costs associated with the development, operation and closure of the Curipamba project; sustained commodity prices such that the Project remains economically viable; and that the geology of the Curipamba project accords with the expectations and projections presented in the FS and PEA and that the Company and Partner will be able to mine at the Curipamba project in accordance with the specifications set out in the FS and PEA.

By their very nature, forward-looking information involves known and unknown risks, uncertainties and other factors which may cause the actual results, performance or achievements of the Company and Partner to be materially different from any future results, performance or achievements expressed or implied by the forward-looking information. Such factors include, among others, risks related to the ability of the Company and its Partner to accomplish its plans and objectives with respect to the FS, PEA and the Project within the expected timing or at all, including the ability of the Company and Partner to improve the economics and finance-ability and de-risk the Curipamba project; the timing and receipt of certain approvals and the risk that certain necessary approvals may never be received; changes in commodity and power prices; changes in interest and currency exchange rates; that the cost estimates presented in the FS and PEA may not be representative of the actual development, construction, operational and closure costs associated with the Curipamba project; risks inherent in exploration estimates and results; the timing and success of the development of the Curipamba project is not guaranteed and the Partner may not construct and operate the Curipamba project on the timelines or in the manner presented in the FS or PEA, or at all; that the Partner may be unable to conclude the non-equity financing and may be required to pursue other methods of financing the Curipamba project, or may be unsuccessful in financing the Curipamba project; inaccurate geological, mining, and metallurgical assumptions (including with respect to size, grade and recoverability estimates, estimates of mineral reserves and resources and mine life estimates); changes in development or mining plans due to changes in logistical, technical or other factors; unanticipated operational difficulties (including failure of plant, equipment or processes to operate in accordance with specifications, cost escalation, unavailability of materials, equipment and third party contractors, delays in the receipt of government approvals, industrial disturbances or other job action, and unanticipated events related to health, safety and environmental matters); that the Partner may not be able to increase expected mine life or expected production through resource conversion, project extension and exploration; political risk; social unrest; changes in general economic conditions or conditions in the financial markets; risks associated with the Partner’s investor base; and other risks and uncertainties that are more fully described in the Company’s and Partner’s respective most recent annual information form, interim and annual consolidated financial statements and management’s discussion and analysis of those statements, all of which are filed and available for review under the Company’s and Partner’s respective profiles on SEDAR at www.sedar.com. Should one or more of these risks or uncertainties materialize, or should underlying assumptions prove incorrect, actual results may vary materially from those described in forward-looking information. In addition, there can be no assurance regarding the achievement or timing of the Company’s and Partner’s exploration, development, construction or commercial production objectives.

Although the Company has attempted to identify important factors that could cause actual actions, events or results to differ materially from those described in forward-looking information, there may be other factors that cause actions, events or results not to be as anticipated, estimated or intended. The Company provides no assurance that forward-looking information will prove to be accurate, as actual results and future events may differ from those anticipated in such statements. Accordingly, readers should not place undue reliance on forward-looking information.

The technical information contained in this presentation has been reviewed and approved by Kieran Downes as a “qualified person” as defined in National Instrument 43-101 Standards of Disclosure for Mineral Projects.

All currency figures in this presentation are in US dollars unless otherwise stated.

SCIENTIFIC AND TECHNICAL MINING DISCLOSURE

The following independent qualified persons (“IQPs”) co-authored the Technical Report. These IQPs have approved the information that pertains to the sections of the Technical Report that they are responsible for:

David Ross, P.Geo., RPA

Metallurgy and Processing: Avakash Patel, P.Eng., RPA

Mineral Resource estimate: Dorota El Rassi, P.Eng., RPA

: Hugo Miranda, P.Eng., RPA

Infrastructure and Economic Evaluation:

Torben Jensen, P.Eng., RPA

Environmental & Community: Ken Embree, P.Eng., Knight

Each of the individuals above are independent qualified persons for the purposes of National Instrument 43-101. All scientific and technical information in respect of El Domo and or the PEA is based on information prepared by or under the supervision of those individuals. The Mineral Resource estimate in this presentation has been classified in accordance with CIM Definition Standards - For Mineral Resources and Mineral Reserves (May 14, 2014).

Kieran Downes, P.Geo., a qualified person as defined by National Instrument 43-101 and a consulting geologist for Salazar, is responsible for other scientific and technical disclosure contained in this presentation.

ECUADOR HAS UNTAPPED POTENTIAL FOR SPECTACULAR GOLD AND COPPER DISCOVERIES

SIGNIFICANT DEPOSITS IN ECUADOR

Porphyry

1985 Llurimagua

982 Mt @ 0.89% Cu, 0.04% Mo

1998 Cangrejos

1.08 Bt @ 0.48 g/t Au, 0.09% Cu,
(20.5 Moz Au)

2003 Warintza

1.5 Bt @ 0.52% CuEq.

1996 Panantza

463 Mt @ 0.4% Cu.

2005 Mirador

437.6 Mt @ 0.61% Cu, 190 ppb Au,
1.5 g/t Ag. (M+I)

2013 Cascabel

2.6 Bt @ 0.53% CuEq.

Epithermal

1990 Rio Blanco

2.15 Mt @ 9.5 g/t Au, 69 g/t Ag (M+I)
3.6 Mt @ 3.2 g/t Au, 18 g/t Ag (Inferred)

2004 Loma Larga

24.1 Mt @ 3.76 g/t Au, 24.8 g/t Ag

2005 Fruta del Norte

6.80 Moz Au, 8.90 Moz Ag. (M+I)
1.70 Moz Au, 3.50 Moz Ag. (Inferred)

VMS / Polymetallic

1990 Tambo Grande

TG3 (Algarrobos)
82 Mt 1.0% Cu, 1.4% Zn,
0.8 g/t Au and 25 g/t Ag,

2008 El Domo

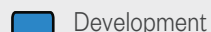
10 Mt @ 5% CuEq.

1990 La Plata

1.8 Mt @ 12.9 g/t AuEq.



LEGEND



Note: * 2019 estimates, USGS

PROMISING FEATURE FOR THE MINING INDUSTRY

EMERGING AS A MORE STABLE INVESTMENT JURISDICTION

**Presidencial
Elections in April
2025 elected
Daniel Noboa,
pro-mining
president**

**Institutional
support for
permitting and
regulatory
stability**

**Possibility of
Opening of
the Cadaster.**

LATEST EVENTS AS A RESULT OF NEW GOVERNMENT OUTLOOK.



CANGREJOS

Acquisition by CMOC for
\$581M



LOMA LARGA

Government completed a
mandated consultation process.
Environmental license Acquired



WARINTZA

\$200M financing deal with
Royal Gold



EL GUAYABO

IPA signed with Ecuadorian
government for \$75M
investment

18 YEARS OF SUCCESSFUL IN-COUNTRY MANAGEMENT

UNIQUELY WELL-PLACED TO MAKE AND MANAGE THE NEXT MINERAL DEPOSIT DISCOVERY

MANAGEMENT

Fredy E. Salazar President and CEO

Fredy is a seasoned geologist with 18+ years in Ecuador, including Exploration Manager role at Newmont, and a track record on major discoveries such as Fruta del Norte.

Francisco Soria Exploration Manager

Francisco is a geologist with 30+ years of experience, including work with Newmont and IMZ, and was instrumental in major projects such as Cangrejos, Rio Blanco, and the discovery of El Domo.

Pablo Acosta
CFO, Corporate
Development

Freddy D. Salazar
Manager, Corporate
Development

Christian Paramo P.Geo.
Manager, Corporate
Development

BOARD

Merlin Marr-Johnson
Non-Executive Director

Jennifer Wu
Non-Executive Director

Nick DeMare
Non-Executive Director

Kieran Downes P.Geo.
Qualified Person

EXPERIENCE

Mineral Resources discovered with the participation of the Salazar Team

Fruta del Norte: 5.02 Moz Au, 6.59 Moz Ag.

Rio Blanco: 0.93 Moz Au, 6.16 Moz Ag.

Cangrejos: 16.8 Moz Au.

Gaby: 356 Mt @0.6 g/t Au
(6.9 Moz Au).

El Domo: 10 Mt @ 5% CuEq.

2025 WELL BALANCED PORTFOLIO

NESTING THE NEXT MAJOR AU-CU DISCOVERY

EL DOMO



EL DOMO
25% stake



Construction
started
Jan 2025

EXISTING PROJECTS



MACARA (VMS)
Discovery Potential



2025

Initial surface
exploration work.
Community relations.
New partnerships for
development.

NEW PROJECTS



LOI with SVM:
Signed:
Dec.23 2024



To acquire 100%
ownership on
Santiago, Pijili,
Tarqui & Quimi

* Notes: El Domo - Curipamba Feasibility Study Results (2021.10.26) see news release, & SEDAR filed NI 43-101 Technical Report (2021.12.10)
Estimates for 2023, Ministry of Energy and Mines
† See News Release of Dec.23, 2024

Q2-2025 ECUADOR'S PROVEN EXPLORER

EL DOMO: CONSTRUCTION UNDERWAY

SILVERCORP METALS (SVM): BALANCE SHEET AND EXPERIENCE FOR SUCCESSFUL PROJECT EXECUTION



In construction, Fully financed,
Fully permitted, Unlocking value



SVM: 20-year track record as profitable
mining operator with Ying Mine



-Civil and Earthworks started January 2025
-On track to production in Q4 2026



\$248M estimated capex funded by SVM
cash on hand & Wheaton stream
payment (\$175M)



CAPEX REDUCTION

SVM announced new plan and capex in April 2025 ¹
-CAPEX reduced to 240.5 M (direct costs reduced)

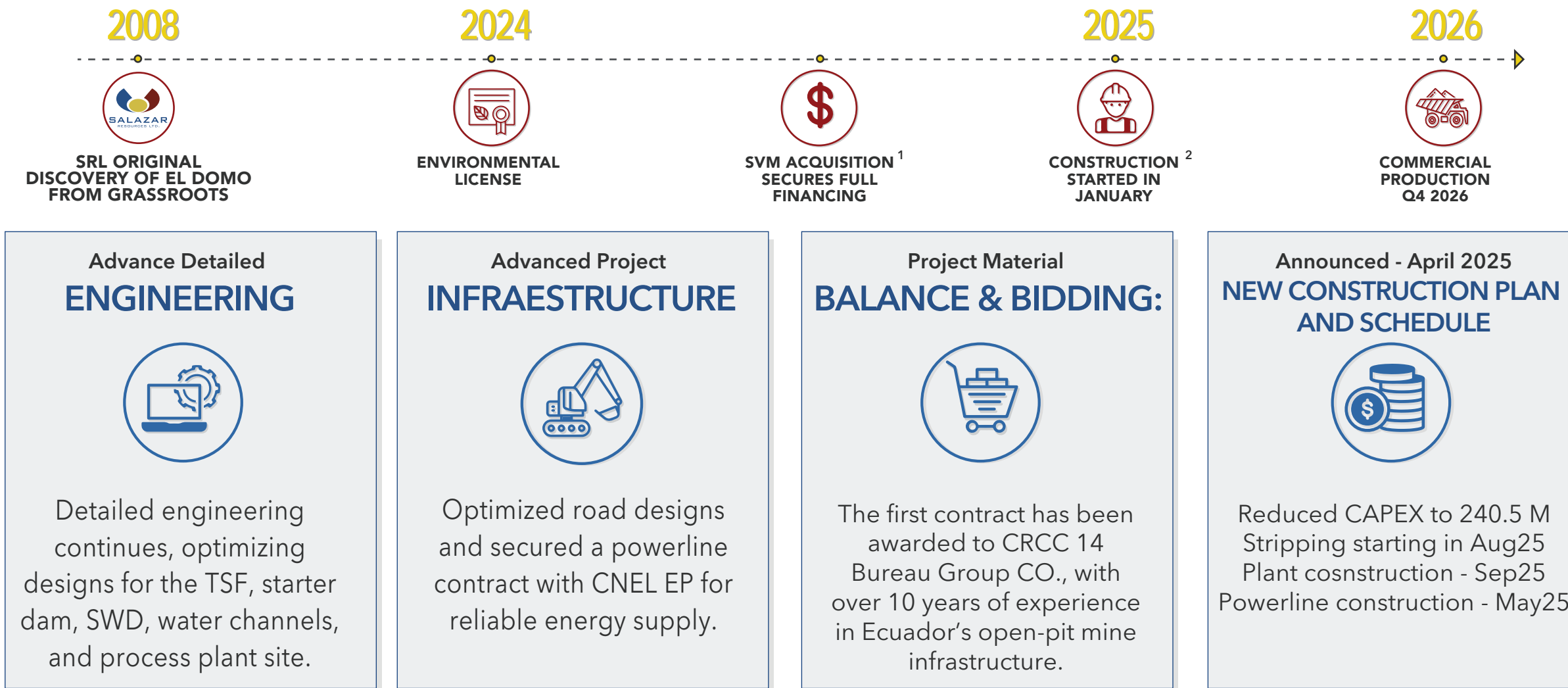


-Design optimisation,
-Owner operator efficiencies and smart purchasing
-Direct purchase of proven plant equipment.

Note: 1. News release from April 23, 2025

EL DOMO: PROGRESS AS OF APRIL 2025

UNIQUELY WELL-PLACED TO MAKE AND MANAGE THE NEXT MINERAL DEPOSIT DISCOVERY



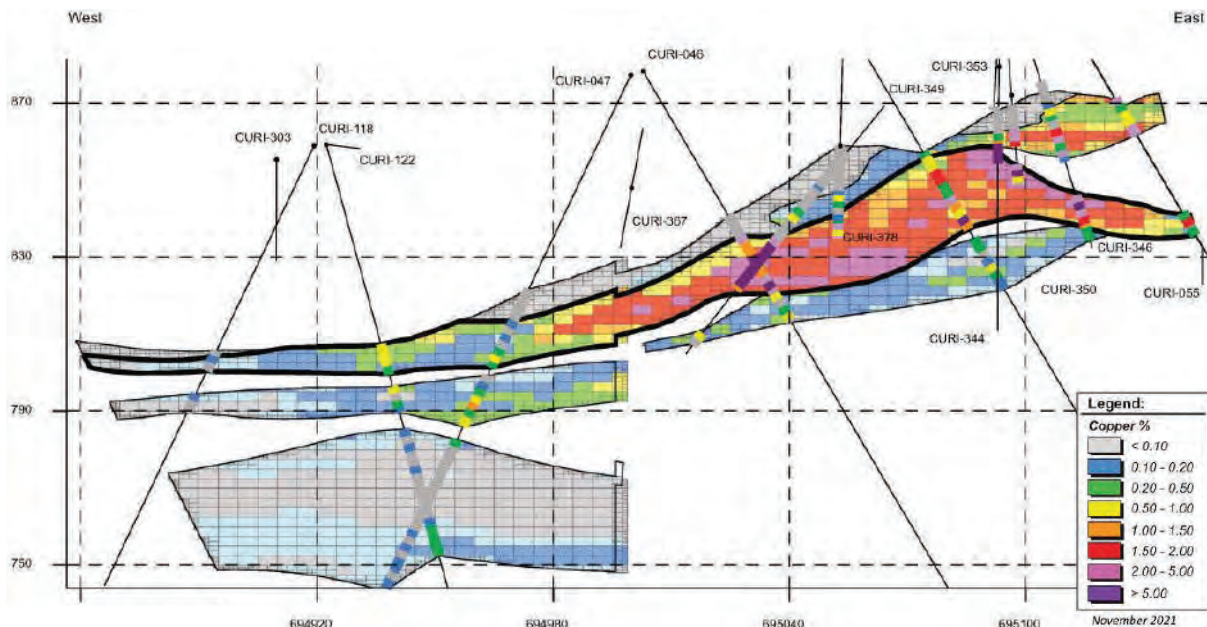
Note: 1. Salazar press release dated July 26, 2024

2. Salazar press release dated January 7, 2025

3. SVM press release from April 23, 2025

FEASIBILITY STUDY HIGHLIGHTS OCTOBER 2021

SALAZAR HOLDS A 25% STAKE, CARRIED TO PRODUCTION



Notes: El Domo - Curipamba Feasibility Study Results (2021 10 26) see news release, & SEDAR filed NI 43-101 Technical Report (2021 12 10)
NPVs are fter-tax, long term price assumptions: \$3.50/lb Cu, \$1.20/lb Zn, \$1,700/oz Au, \$23/oz Ag, \$0.95/lb Pb
Open Pit - Feasibility Study, Underground - PEA, +Includes taxes and royalties, does not include G&A.



Mineral Resources

• **10 Mt @ 5% Cu Eq**
(P and P reserves: 6.5 Mt in Open Pit)



Mineral Content

- 737K Oz Au
- 14870K Oz Ag
- 208K t Cu
- 23Kt Pb
- 255Kt Zn



Daily Production Estimated

- 1850 tpd
- Open Pit 10 years
- Underground 5 years



Taxes, Royalties and Jobs estimated

- 10 Years life of mine
- Tx, Royalties & Others US\$ 376 M
- 3000 Directs & Indirects Jobs



~23,000

TPA Cu eq. LOM



\$1.26/ lb

Cu eq. AISC+



<2.6 Years

Payback



\$103 M

Average Annual EBITDA



\$259 M

Open Pit NPV₈*



\$49 M

Underground NPV₈*



32%

IRR (post tax)*

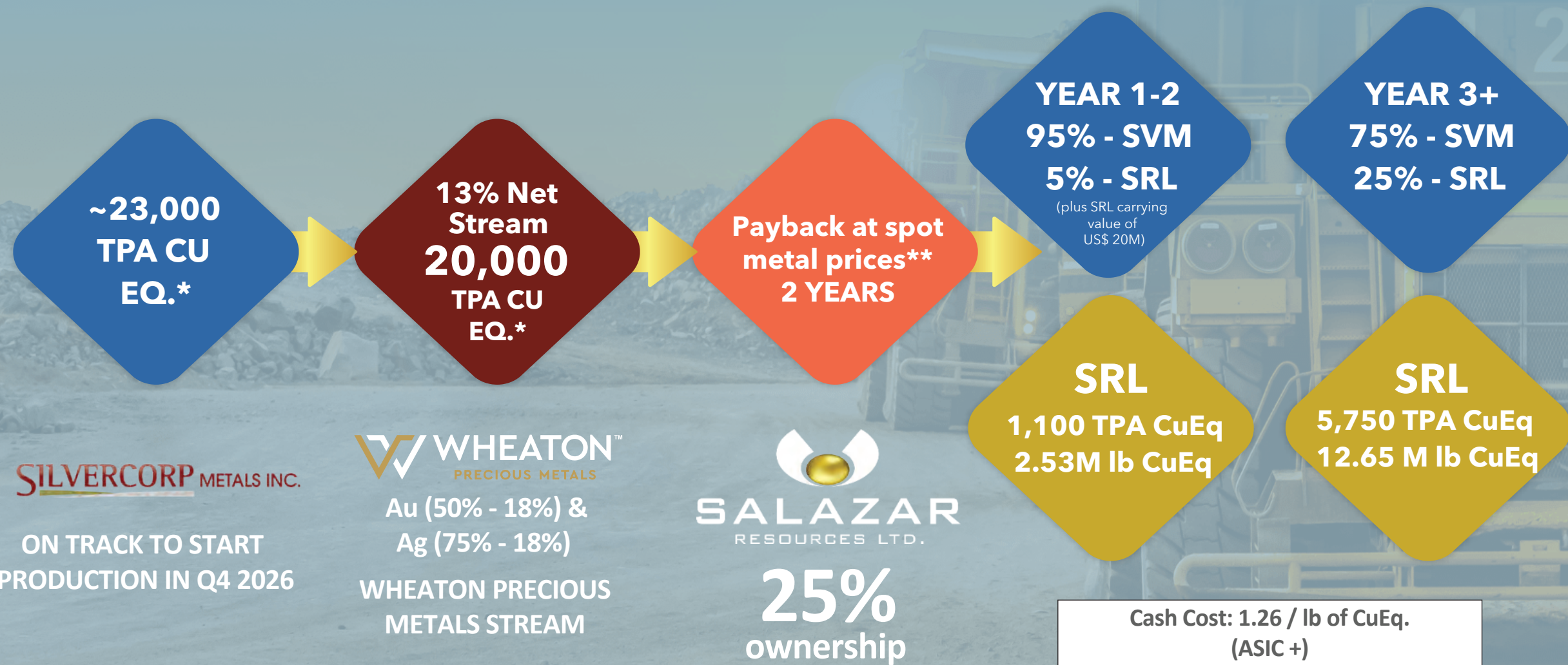


\$497 M

After Tax Cashflow

EL DOMO IS A VALUABLE FINANCIAL ASSET FOR SRL

STRONG FUTURE CASH FLOWS FROM 25% SHARE

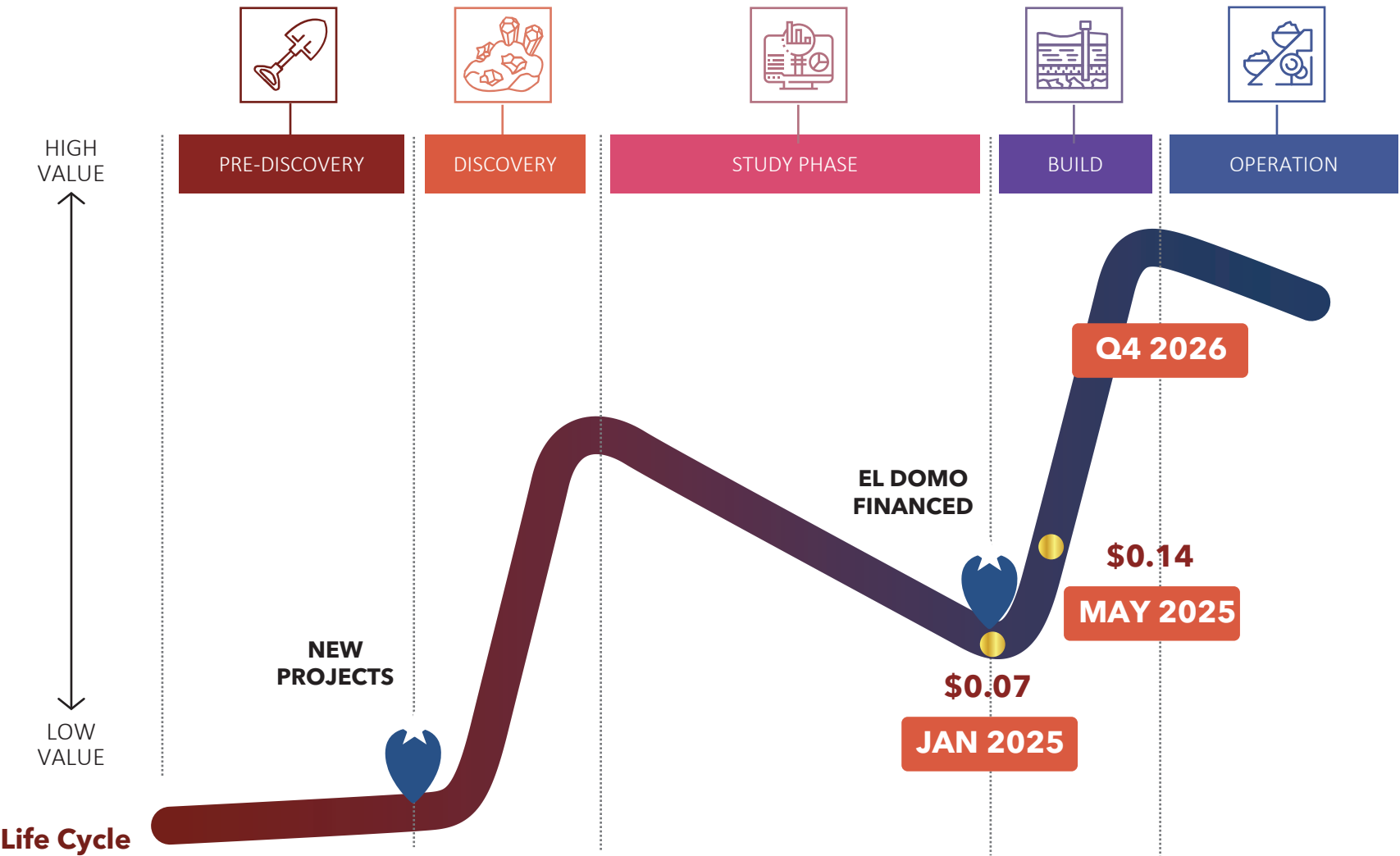


* El Domo - Curipamba Feasibility Study Results (2021 10 26) see news release, & SEDAR filed NI 43-101 Technical Report (2021 12 10)

**Note: Metal prices as of January 21, 2025 + includes taxes and royalties, does not include

SRL 25% EL DOMO STAKE DEEPLY DISCOUNTED

FRESH 100% DISCOVERY TO REDIFINE COMPANY



"I fully intend to find another deposit in Ecuador, and ideally have funding from El Domo to advance exploration on new projects."

Fredy Salazar,
CEO & President

NEW PORTFOLIO, NEW OPPORTUNITIES

ADDITIONAL LAND POSITION THROUGH AGREEMENT WITH SVM AND EXPECTED TO CLOSE ON Q3 2025

MACARA (100%)¹

VMS Polymetallic System

90km NE of the VMS Tambo Grande deposit, Peru.

TG1: 109 Mt tons of 1.6% Cu, 1.0% Zn, 0.5 g/t Au and 22 g/t Ag 7

TG3 (Algarrobos): 82 Mt 1.0% Cu, 1.4% Zn, 0.8 g/t Au and 25 g/t Ag

TARQUI³

Cu-Mo Porphyry Target in the Zamora Metallogenic Belt

Surface Cu anomaly 4kmx2km – drilling confirmed mineralization at depth

15 km south of San Carlos Panantza, 20 km north of Mirador Project

1.5% NSR ROYALTY TO SVM subject to a \$1M repurchase option for 1%

QUIMI

Early Stage Copper-Gold Exploration Project in fertile Mid Jurassic Cu-Au Metallogenic Belt

Southern part of concession is 8 km from the Mirador open pit Cu/Au mine

1.5% NSR ROYALTY TO SVM subject to a \$1M repurchase option for 1%

SANTIAGO^{2,3}

Preserved Porphyry system + Epithermal High Sulfidation

32Km East of Zaruma - Portovelo (5Moz Au)

1.5% NSR ROYALTY TO SVM subject to a \$3M repurchase option

PIJILI^{2,3}

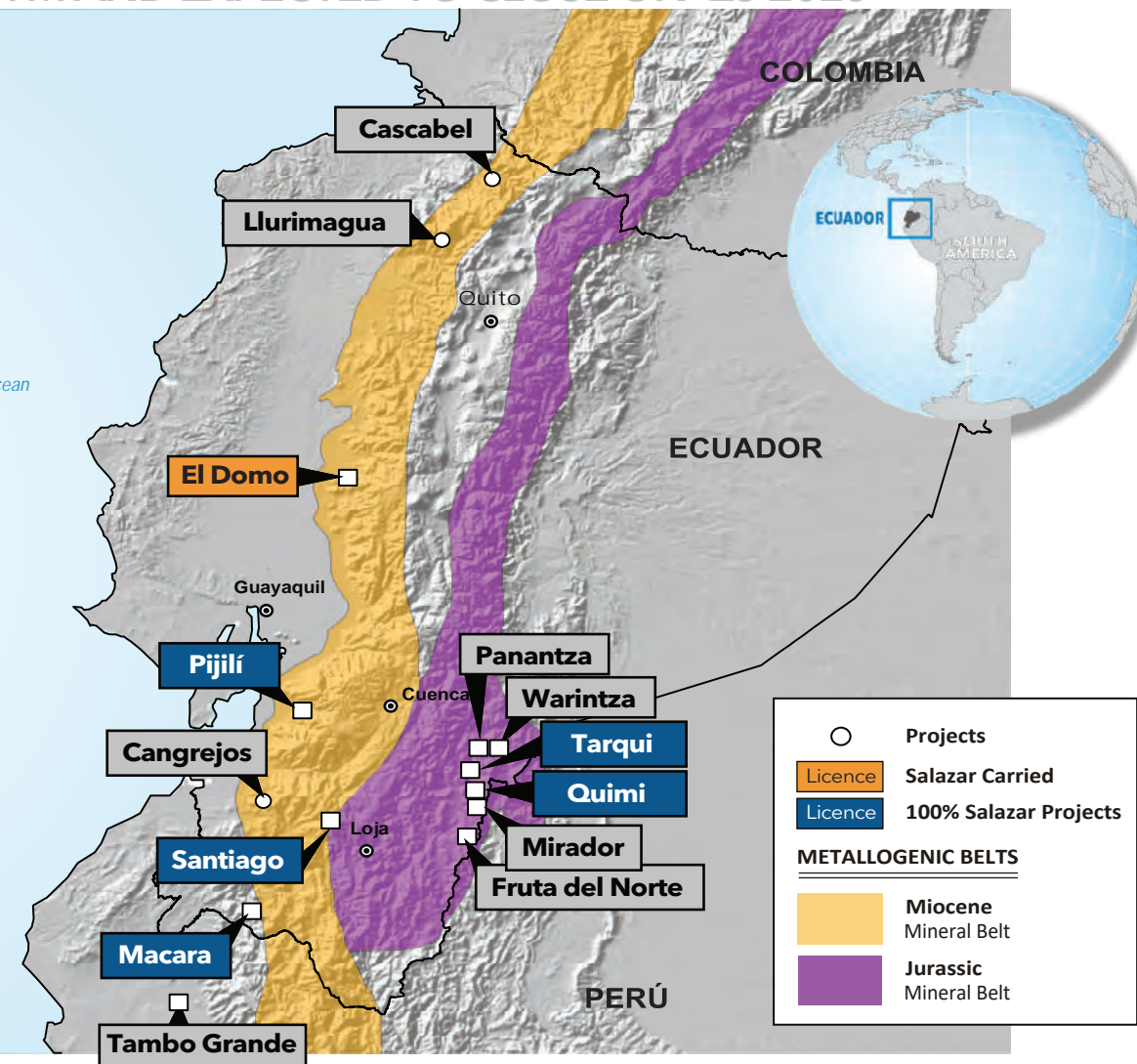
Porphyry Cu-Mo System / Hydrothermal breccias.

5Km S from Chaucha Ecuador (430Mt@0.35% Cu y 0.022% Mo)

1.5% NSR ROYALTY TO SVM subject to a \$1M repurchase option for 1%

New prospective concessions

Increase to 100% ownership from 20%



Notes:

¹ Ground-based Gravity and Magnetic Geophysical Survey Starts at the Macara Gold and VMS Project, Loja, Ecuador (2020 11 12) see news release

² Adventus and Salazar Announce Execution of Ecuador-Wide Exploration Alliance with the Pijilí Project and Provide Curipamba Project Update (2018 03 29) see news release.

³ Press release from December 23, 2024

MACARA PROJECT

VMS SYSTEM + HIDROTHERMAL BRECCIAS HOSTED IN PILLOW LAVAS.



Licence details:



300 ha + 9088 ha requested



Permits for drilling in progress.

LOCATION



Located in Loja province at the South of Ecuador, at 90km northeast of the VMS Tambo Grande deposit.

GEOLOGY



VMS System with hydrothermal breccias + Stockwork hosted in pillow lavas
Mineralization:
py + cpy + sph, stockwork + barite veins.

GEOPHYSICS PROGRAM

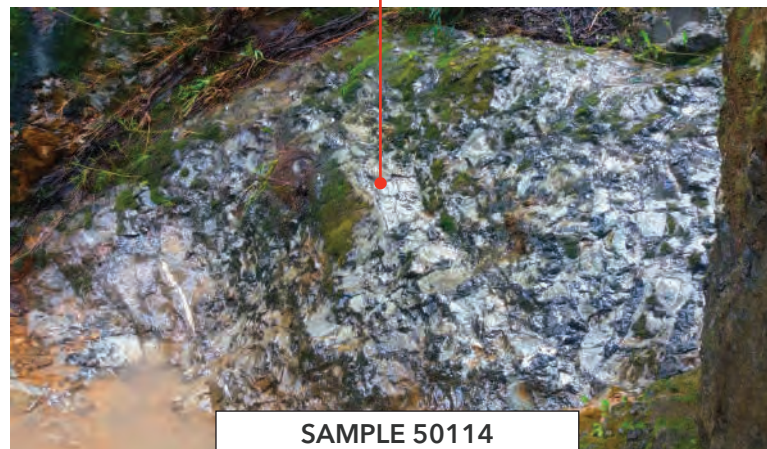


Magnetic and Gravimetrics Surveys.
Coincidental anomalies with soils Au, Cu, Zn.

TAMBO GRANDE



Deposit
TG1: 109 Mt tons of 1.6% Cu, 1.0% Zn, 0.5 g/t Au and 22 g/t Ag
TG3 (Algarrobo):
82 Mt 1.0% Cu, 1.4% Zn, 0.8 g/t Au and 25 g/t Ag.



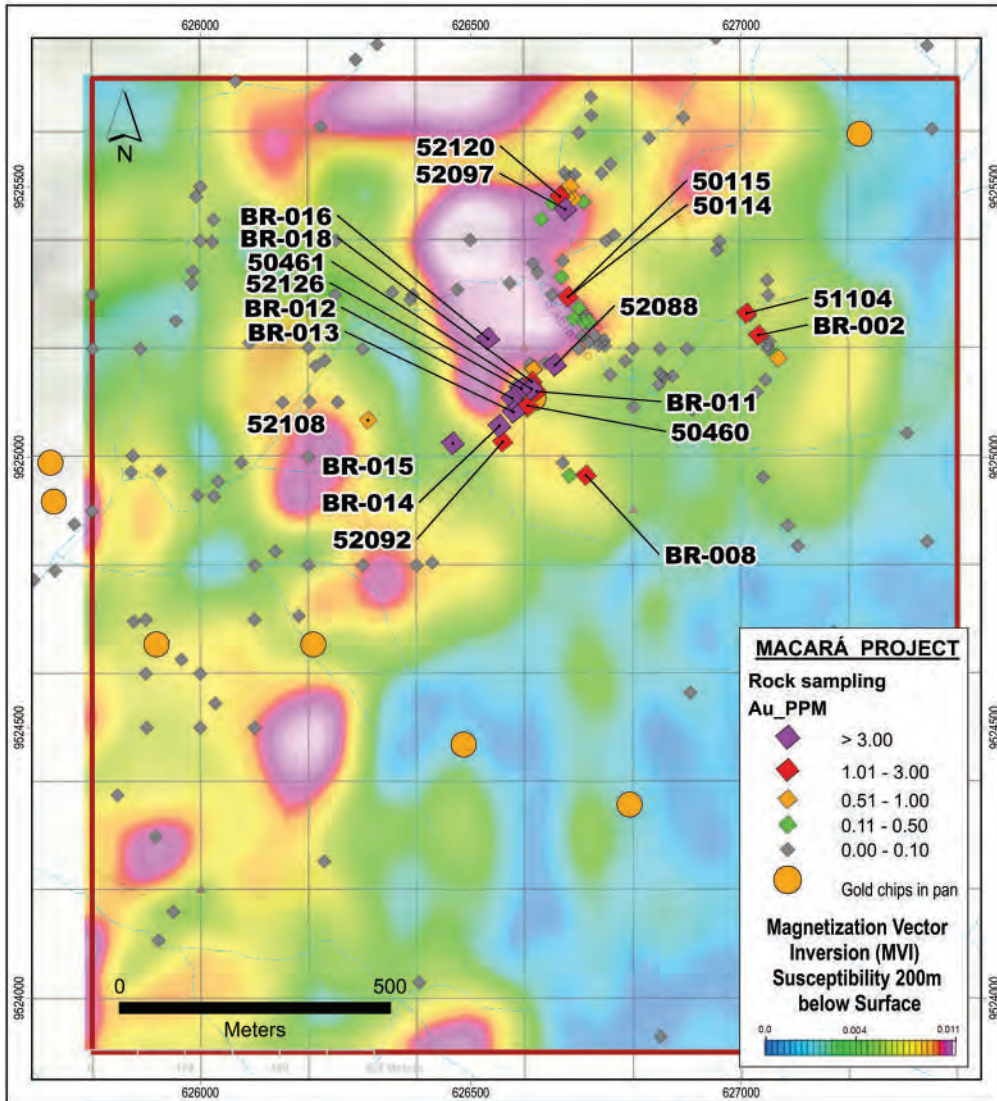
SAMPLE 50114



Pillow Breccia py+cpy+sph
Au: 1.1 g/t - Ag: 46 g/t - Zn: 1245 ppm.

MACARA PROJECT

VMS SYSTEM + HYDROTHERMAL BRECCIAS HOSTED IN PILLOW LAVAS.



MACARA ROCK SAMPLES

MUESTRA	Au (g/t)	Ag (g/t)	Cu (PPM)
50461	29.60	512.00	132
BR-016	22.56	169.90	79
BR-012	14.12	310.10	93
BR-014	11.12	160.90	252
52126	10.50	172.20	1632
BR-015	7.66	237.80	113
BR-013	7.48	123.50	578
52088	6.49	36.70	452
52097	3.77	45.80	206
52092	2.78	116.10	163
BR-018	2.74	138.80	1456
51104	1.80	21.60	47
BR-002	1.70	22.15	87
BR-011	1.65	3.46	103
50115	1.50	128.10	166
50460	1.23	20.30	54
BR-008	1.21	8.49	148
52120	1.20	9.30	247
50114	1.15	46.20	114
52108	0.94	126.40	390

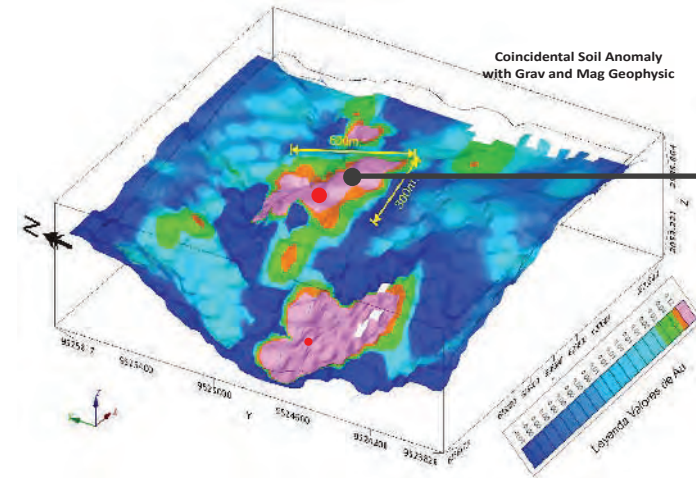


SAMPLE 52120

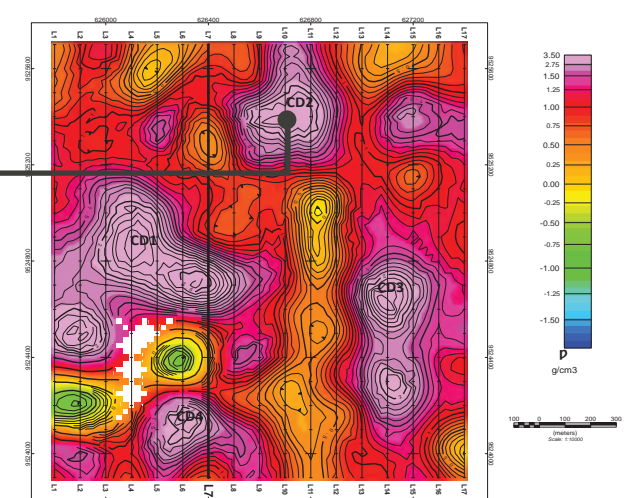
Hydrothermal Breccia baritine-ser + sulph py+cpy
Au: 1.2 g/t - Ag: 9.3 g/t.
Zn: 1356 ppm -Pb: 1682 ppm



SOIL ANOMALY Au



GRAV: DENSITY MODEL 200m DEEP



Notes: Ground-based Gravity and Magnetic Geophysical Survey Starts at the Macara Gold and VMS Project, Loja, Ecuador (2020 11 12) see news release

Q2-2025 ECUADOR'S PROVEN EXPLORER

TARQUI PROJECT:

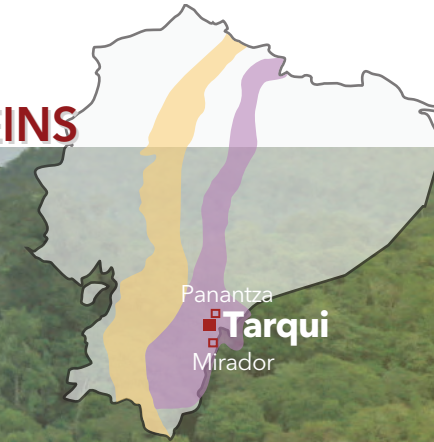
Cu-Mo PORPHYRY TARGET WITH RELATED HIGH-GRADE CORDILLERAN VEINS



Licence details:

4,815ha.

All permits up to date



LOCATION



Located in the Zamora province
in the Jurassic
Metallogenic Belt and 20km
north of Mirador Mine

GEOLOGY



Outcropping copper oxide,
silicate and sulphide
minerals >1.6% Cu. Well preserved
porphyry copper system with moly
>0.4% Mo, Cordilleran veins up to
597 g/t Ag and 38 g/t gold

SURVEY & DRILLING

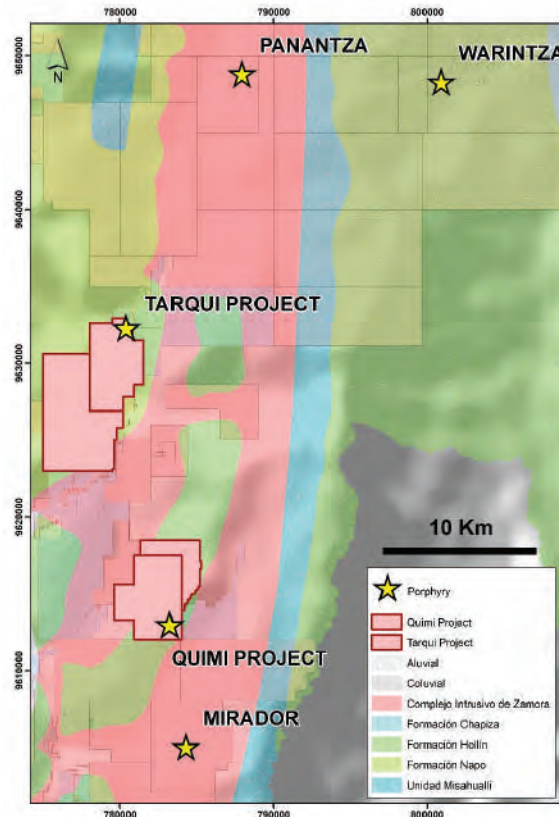


BHP completed geological
mapping, surface geochemistry
and drilling in the main anomaly
porphyry.
6800 m of drilling in 13 drill holes

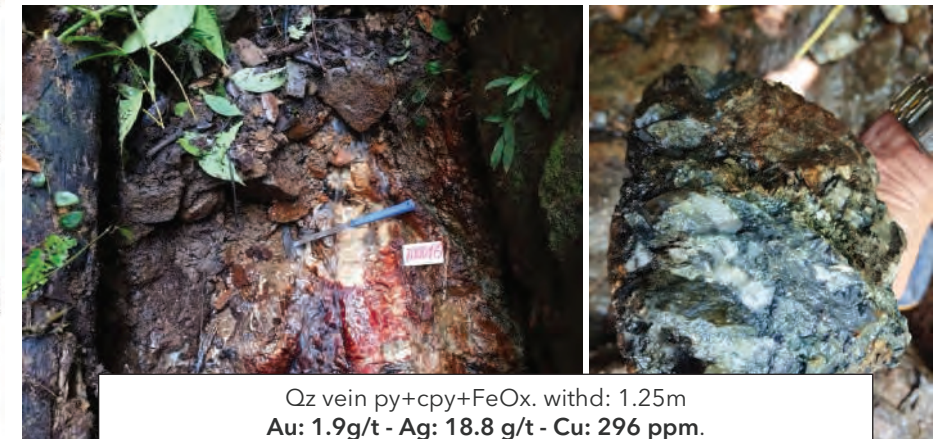
INFO & POTENTIAL



On trend and proximal to major
porphyry Cu-Au and Cu-Mo
deposits
undeconstruction/development
(Mirador, San Carlos, Panantza)



Granodiorite Alt, argillic + sericite + Qz veins + Fe + MnOx .
Sheeted veins 15v/m, Cu: 1952 ppm.



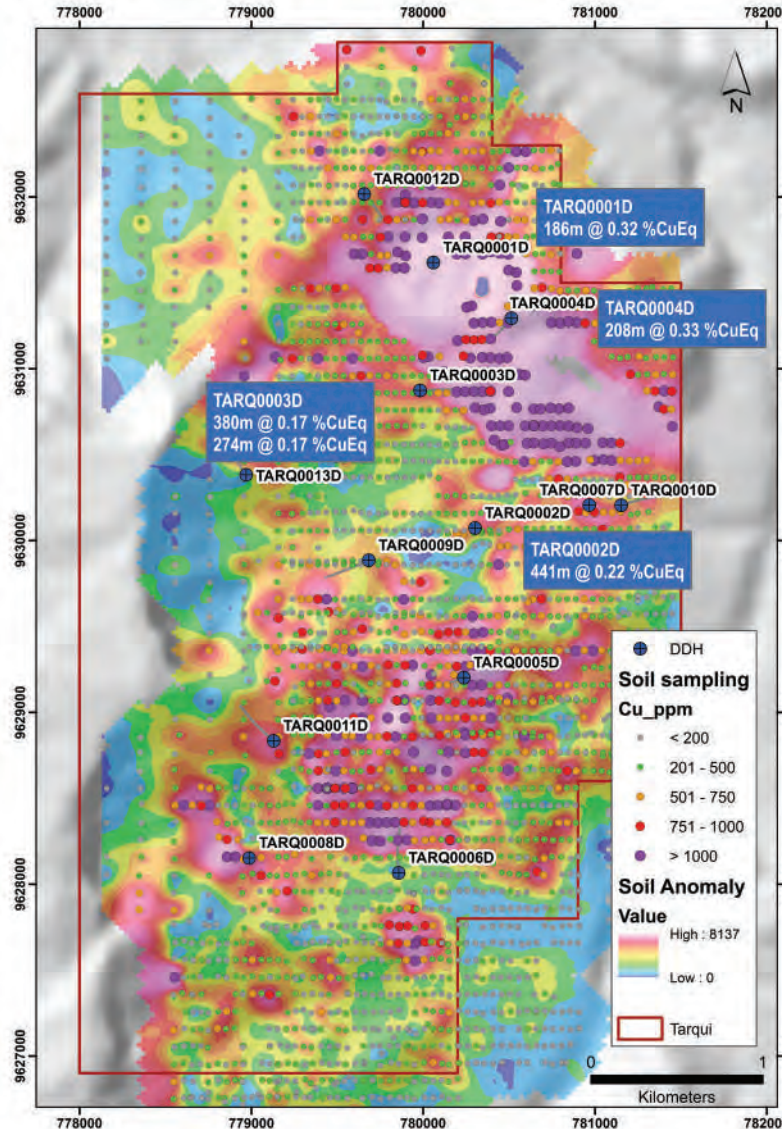
Qz vein py+cpy+FeOx. withd: 1.25m
Au: 1.9g/t - Ag: 18.8 g/t - Cu: 296 ppm.

TARQUI PROJECT:

Cu-Mo PORPHYRY TARGET WITH RELATED HIGH-GRADE CORDILLERAN VEINS

VEIN SAMPLES UP TO 3m WIDE

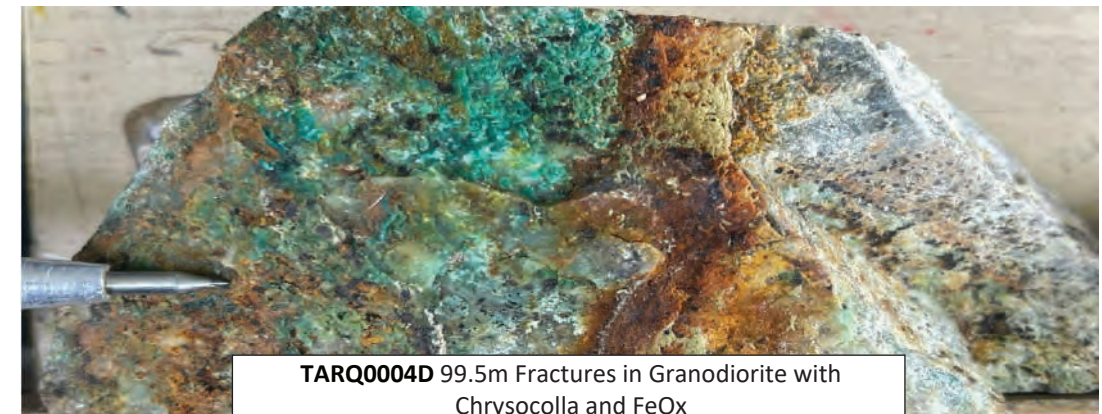
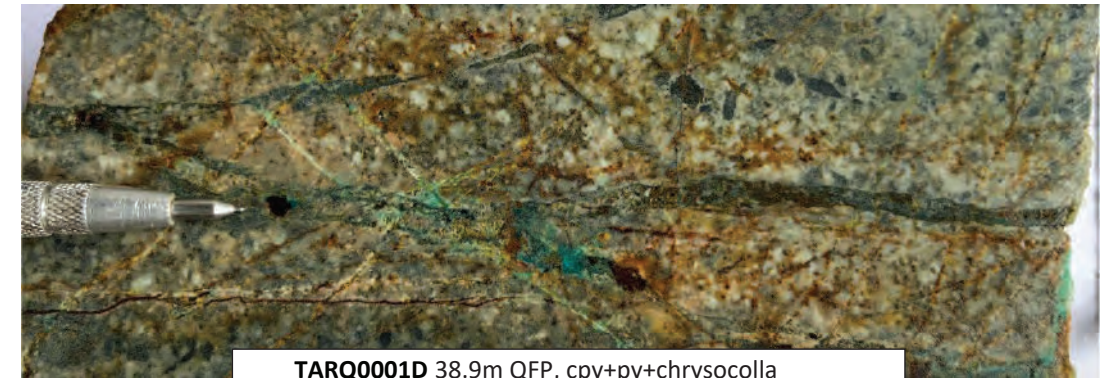
SAMPLE	Au_ppm	Ag_ppm	Cu_ppm	Mo_ppm
700003	1.369	130.6	3223	16
700013	1.732	24.3	585	16
ECU003730	0.726	42.7	>10000	55.1
RW648556	1.925	523	4030	119
RW648557	1.53	597	4910	149
RW649655	3.61	87	1970	54.3
RW649733	0.376	12.15	16450	148
RX084552	0.178	45.6	149000	4110
RX084568	0.264	9.86	2800	3690
RX084573	15.9	>100	25200	1770
RX084575	0.049	21.1	>10000	2710
RX084584	38.3	>100	580	11.5
RX084585	3.3	>100	2480	27.4
RX084661	2.38	>100	3510	54.4
RX084702	0.067	3.25	>10000	3900
RX084708	2.04	84.4	>10000	6630
RX084743	0.056	8.95	57100	13.2
RX084744	0.015	2.36	14700	5.78
RX085029	2.87	7.88	1210	3.04
RX085035	0.255	49.4	>10000	49.2
RX085050	0.042	4.37	2130	6560



DDH 6800m IN 13 DRILL HOLES

HOLE	FROM	TO	WIDTH	Cu(ppm)	Mo(ppm)	CuEq (%)
TARQ0001D	0	186	186	2840	10.5	0.32*
TARQ0002D	250	691.2	441.2	1604	80	0.22*
TARQ0003D	36	416	380	1451	20	0.17*
	430	704	274	1531	20	0.17*
TARQ0004D	0	208	208	2912	5	0.33*

*CuEq metal prices as of February 18, 2025: US\$4.36/lb copper, US\$2,898/oz gold and US\$21.86/lb molybdenum



QUIMI PROJECT:

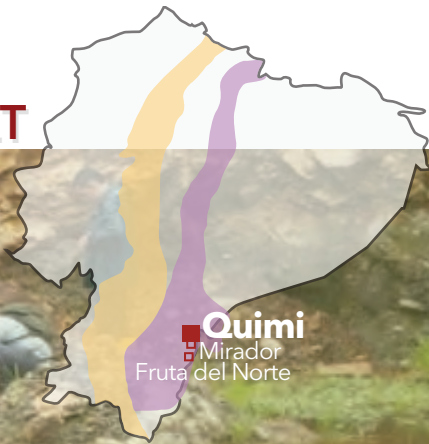
EARLY STAGE COPPER -GOLD PROSPECT IN JURASSIC METALLOGENIC BELT



Licence details:

2,732 ha

All permits up to date



LOCATION



Located in the Morona province on the southern extent of the Jurassic Cu-Au Metallogenic Belt and in proximity to Mirador Mine.

GEOLOGY



NW structural control related to quartzodioritic intrusives, mineralization of Qz, FeOx, malachite, py +/- Au and Cu-Mo-Pb-Zn sulfides. Associated with a possible Cu-Mo porphyry system.

SURVEYS



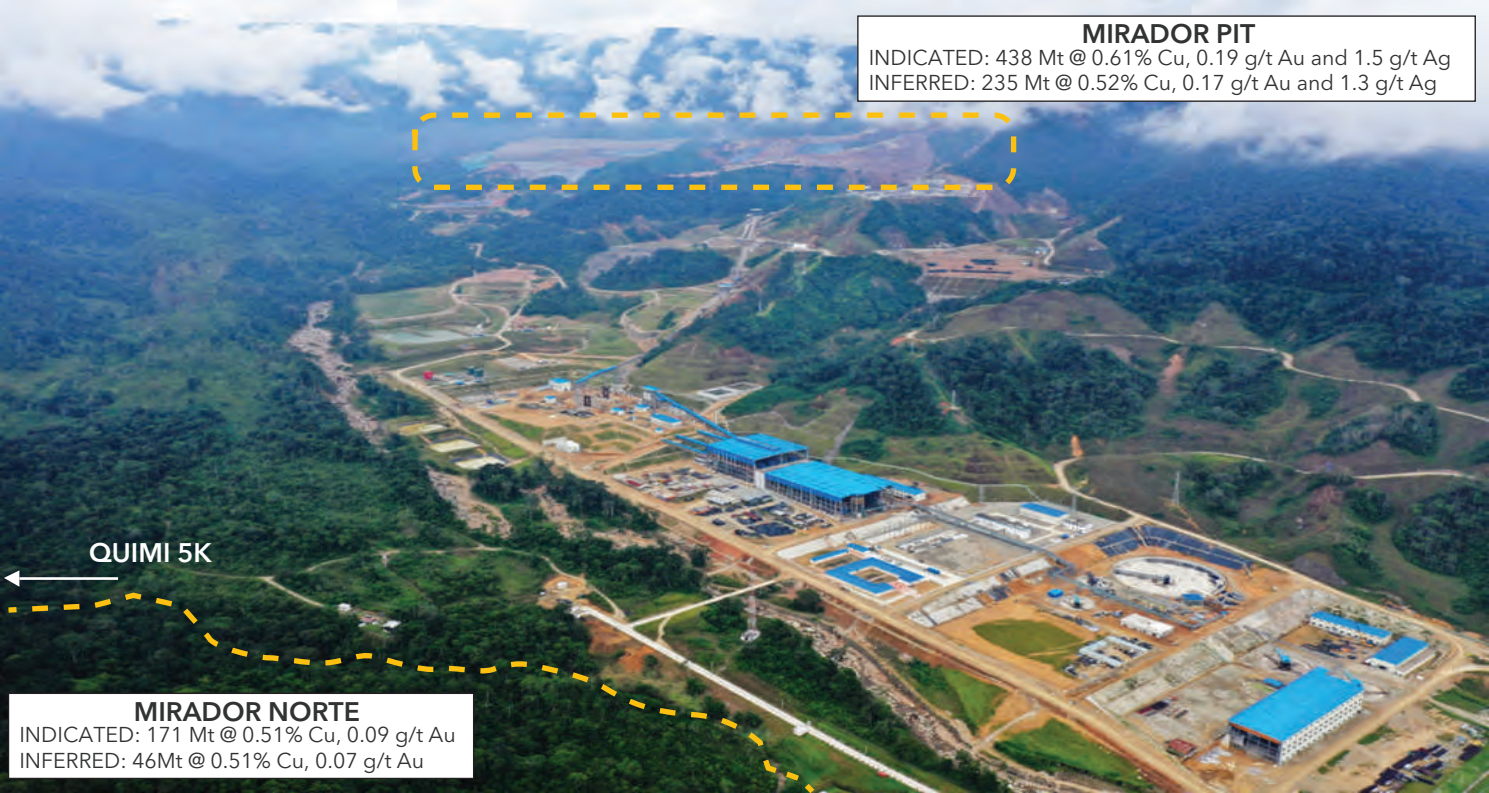
Additional surface geochemistry, mapping and soils surveys.

INFO & POTENTIAL



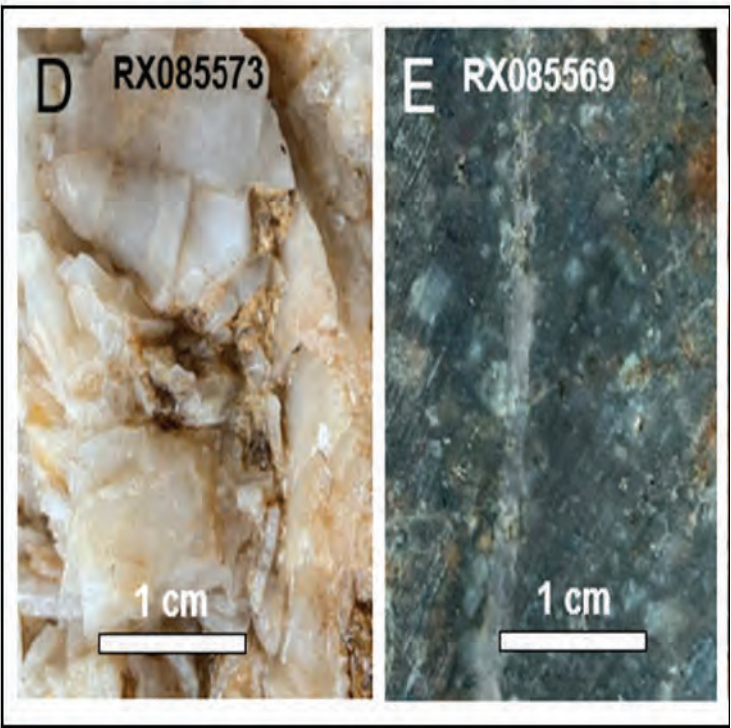
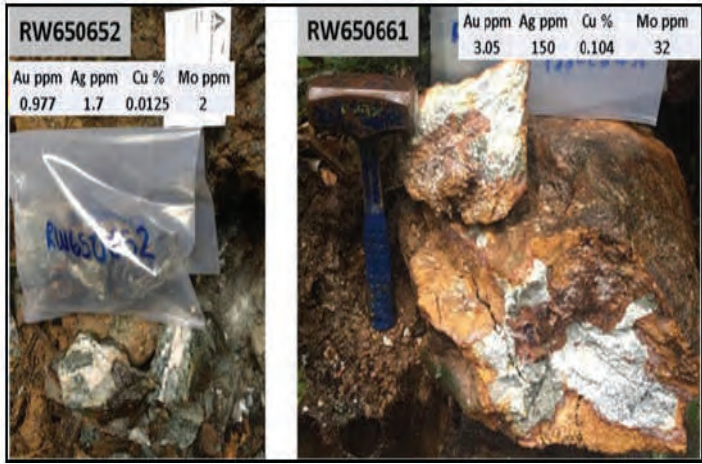
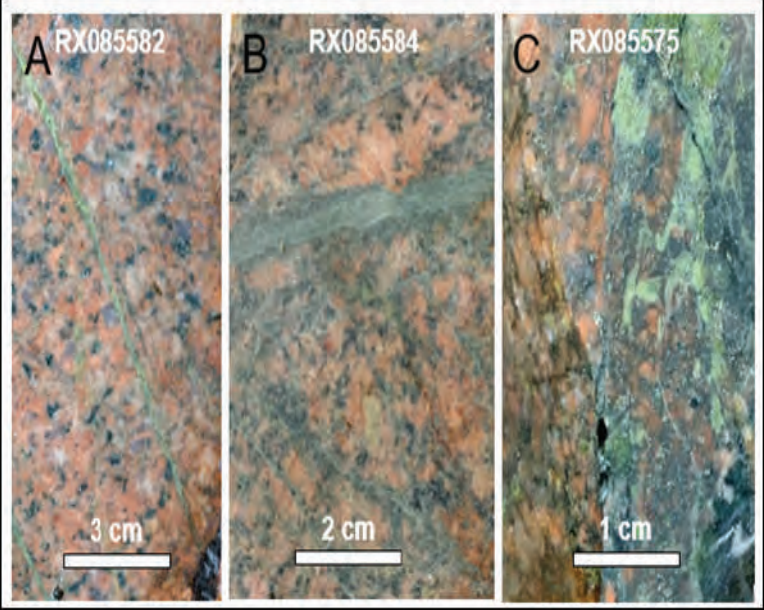
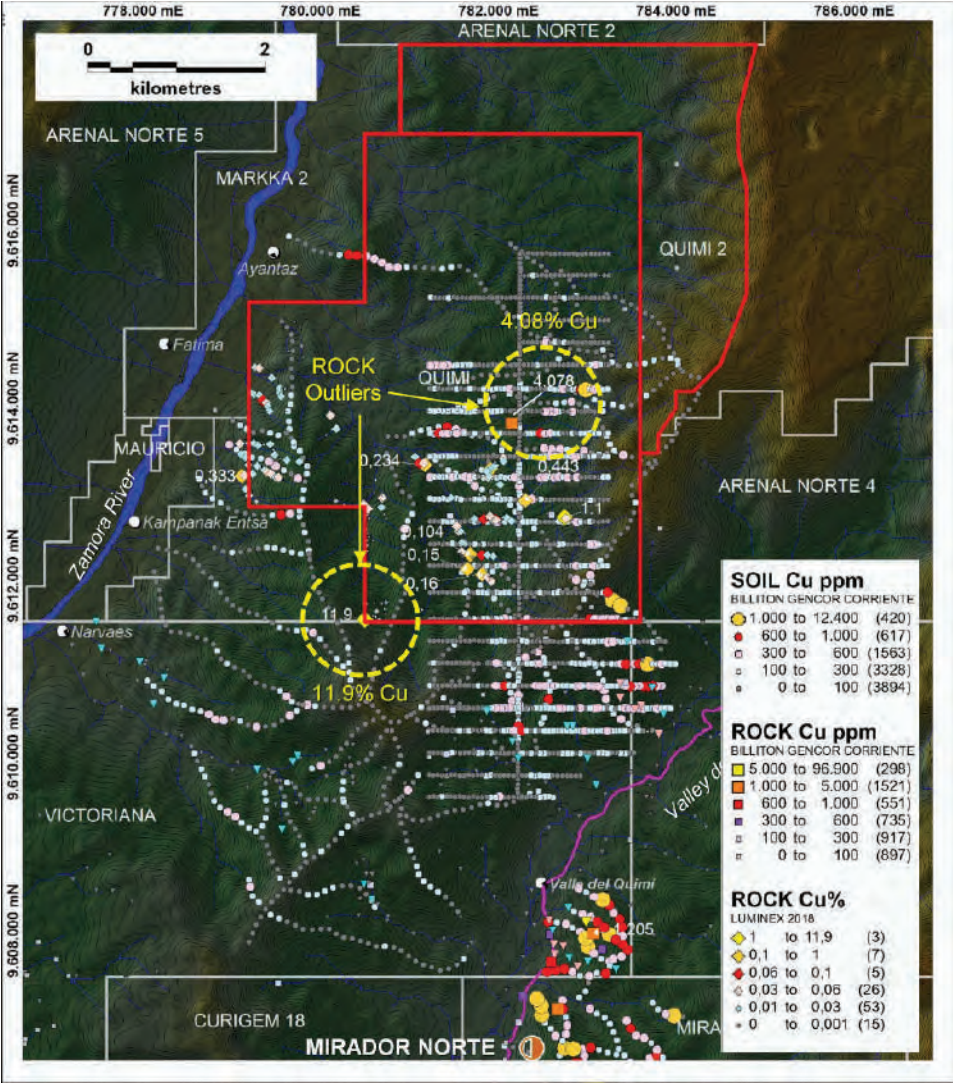
Quimi Cu concentrations are statistically order of magnitude less than Mirador copper concentrations but exhibit significant outliers in terms of Cu, Au, Ag, Mo and Zn.

Quimi South Cu anomaly located 5km from Mirador Norte Copper Deposit



QUIMI PROJECT:

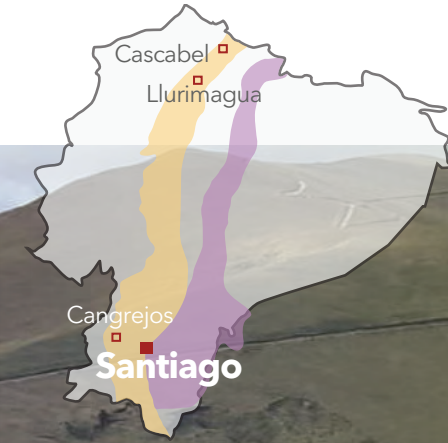
EARLY STAGE COPPER -GOLD PROSPECT IN JURASSIC METALLOGENIC BELT



Samples taken from the early February 2019 field commission to southern Quimi. A. Strong potassic mottle in biotite altered, medium grained intrusive with epidote veinlets and 5-10% matrix py, 1-2% matrix cpy. B. Albite veins crossing K-altered medium grained Intrusive with 5% matrix py, 1-2% cpy. C. Deformed medium grained intrusive with blotchy epidote-chlorite and py veinlets. D. Barite vein. E. Magnetite and biotite replacement of matrix with mm-scale D veinlet.


SANTIAGO PROJECT:

EARLY STAGE COPPER- GOLD IN THE MIOCENE MINERAL BELT



Licence details:

 2,350 ha.

 All permits up to date

LOCATION



Located in the province of Loja, 37km north of the city of Loja.

GEOLOGY



Cu and Au geochemical anomalies with coincident geology, shallow drilling results and geophysical anomaly that includes quartz-alunite alteration.



ESPAÑOLA VEIN



HIGH GRADE STRUCTURE



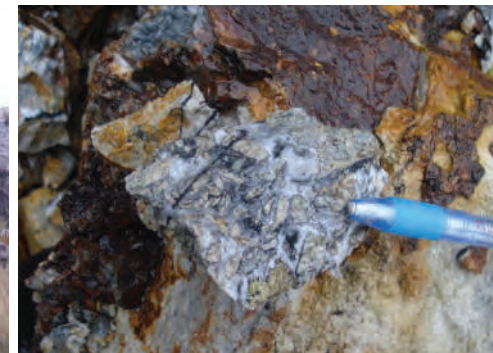
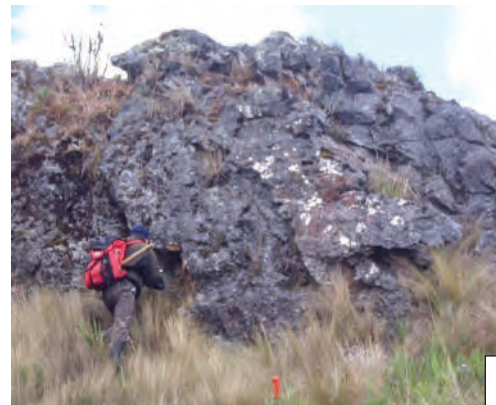
The veins and structures occur in volcanic rocks adjacent to a felsic intrusive. Widths up to:

- Ribs Zone 5 m
- Española Vein 3m
- Qz Tourmaline 3m
- Ancha Vein 5m
- FU structure 1.5 m

INFO & POTENTIAL



Newmont completed shallow drilling on an interpreted lithocap, leaving deeper porphyry potential unexplored. Airborne MMT delineates porphyry signature below shallow drilling.

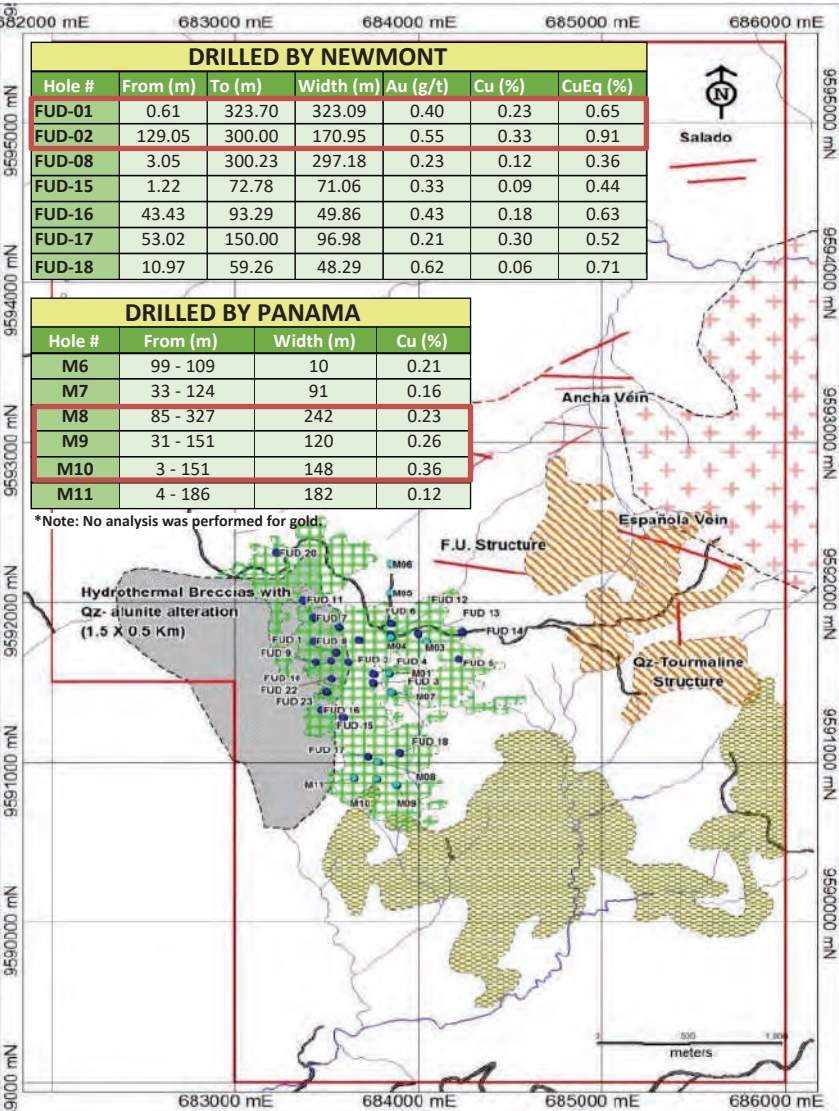


QUARTZ TOURMALINE VEIN

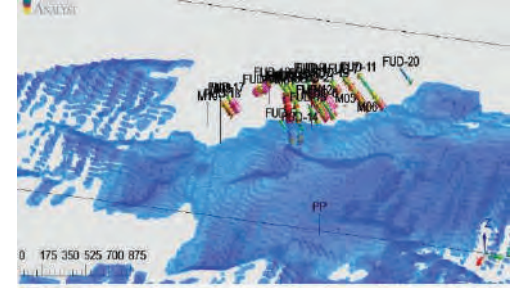
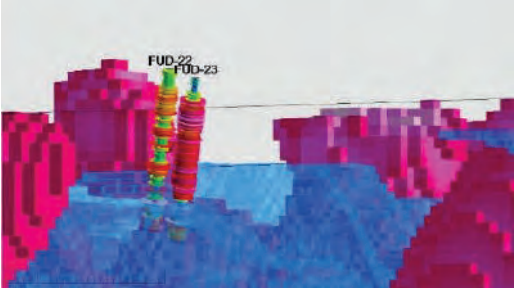
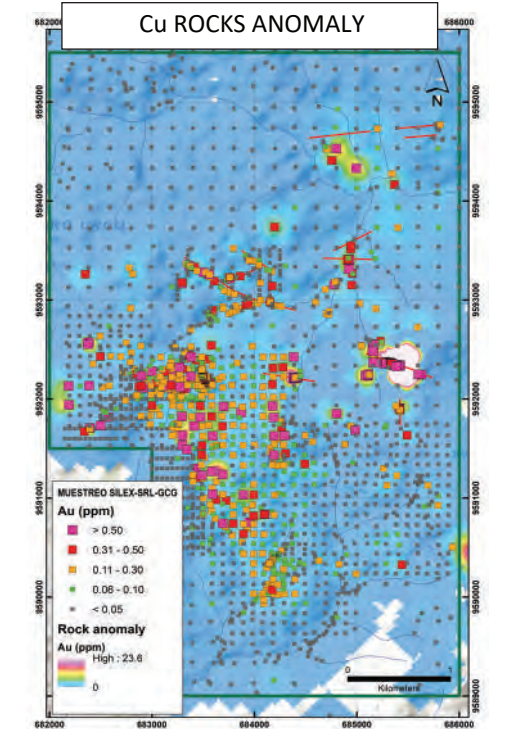
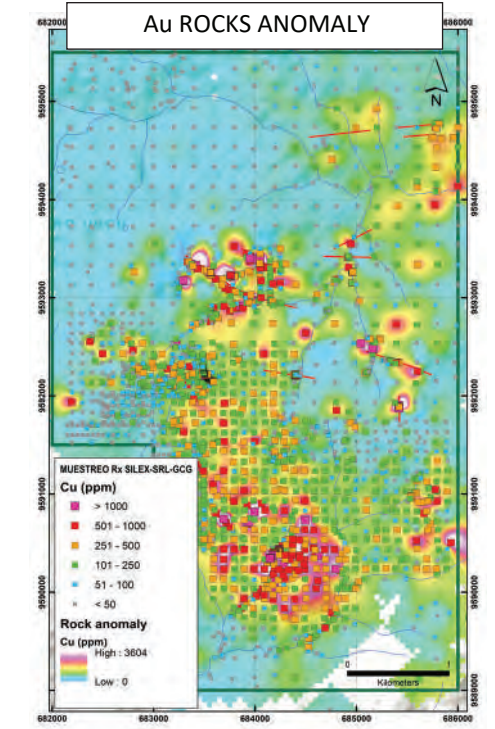
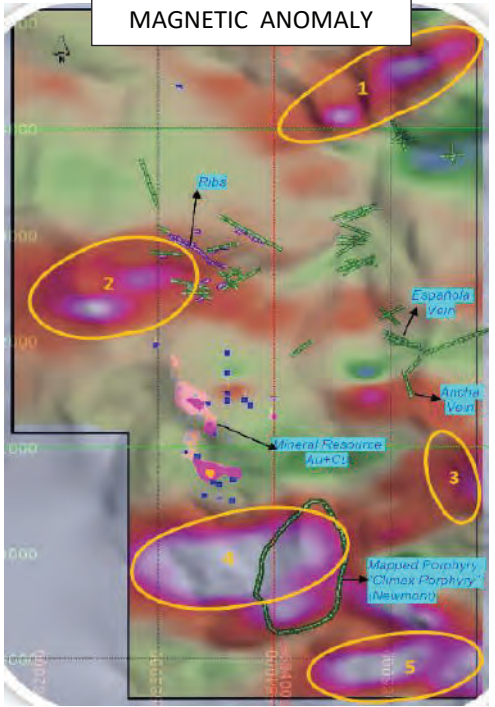


SANTIAGO PROJECT:

EARLY STAGE COPPER- GOLD IN THE MIOCENE MINERAL BELT



HIGH GRADE STRUCTURE SAMPLES					
SAMPLE	STRUCTURE	Width (m)	Au (g/t)	Ag (g/t)	
150556	Veta Qz-Tourm	1.90	1.19	14.3	
150557	Veta Qz-Tourm	3.30	0.59	36.6	
150560	Española Vein	1.00	18.2	251.7	
150563	Española Vein	1.00	25.97	242	
150565	Española Vein	0.50	4.85	442	
150566	Española Vein	0.50	8.3	79.3	
150601	Española Vein	2.00	28.1	231.1	
150602	Española Vein	1.50	4.06	31.2	
150603	Española Vein	1.50	18.15	148	
150606	Española Vein	2.50	12.8	113.4	
2216	Ribs-Veta Ancha	1.00	1.29	>100	
2217	Ribs-Veta Ancha	1.00	1.65	>100	
150616	Estructura FU	1.40	4.81	378	
150617	Estructura FU	1.00	1.94	82.6	
150618	Estructura FU	1.20	4.22	183.3	
150620	Estructura FU	1.20	6.4	135.9	



(3D geophysical section of Apparent Conductivity voxel model, looking East)

PIJILI PROJECT:

Cu-Au PORPHYRY SYSTEM WITH EPITHERMAL TARGET AREAS



Licence details:

 909ha.

 All permits up to date

Pijilí
Chaucha

LOCATION



Located in the west of the province of Azuay, with in a district of artisanal mining activity and prospective for massive copper porphyries i.e. **Chaucha Project**

GEOLOGY



Cu-Au-Mo surface anomaly with related high grade Ag-W mineralization. The mineralization trends with large Chaucha porphyry, located just 3km to the north.

HIGH GRADE STRUCTURE



Additional geochemical sampling and drilling needed to delineate mineralized body.

INFO & POTENTIAL

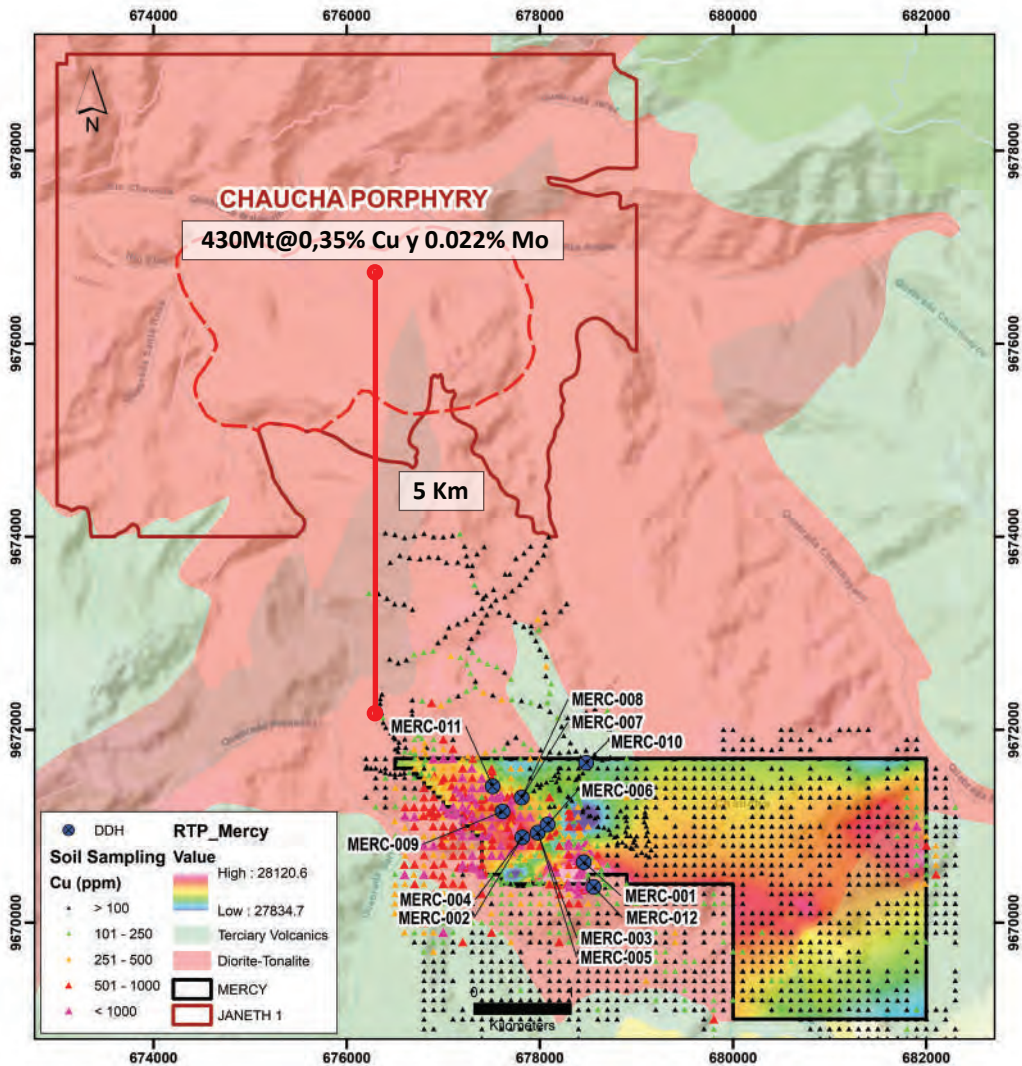


- Concession Mercy was drilled in 2021-2022 intersecting Cu-Au-Mo mineralization.
- Carmen de Pijilí with surface geochemical anomalies.



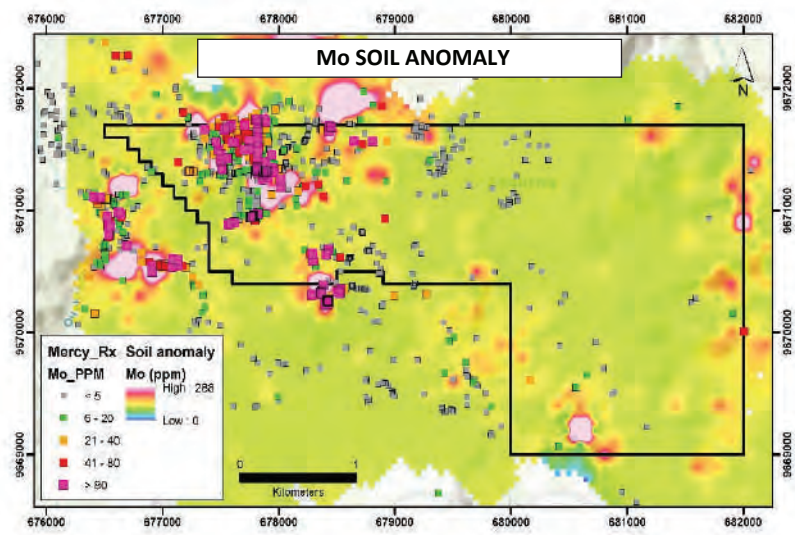
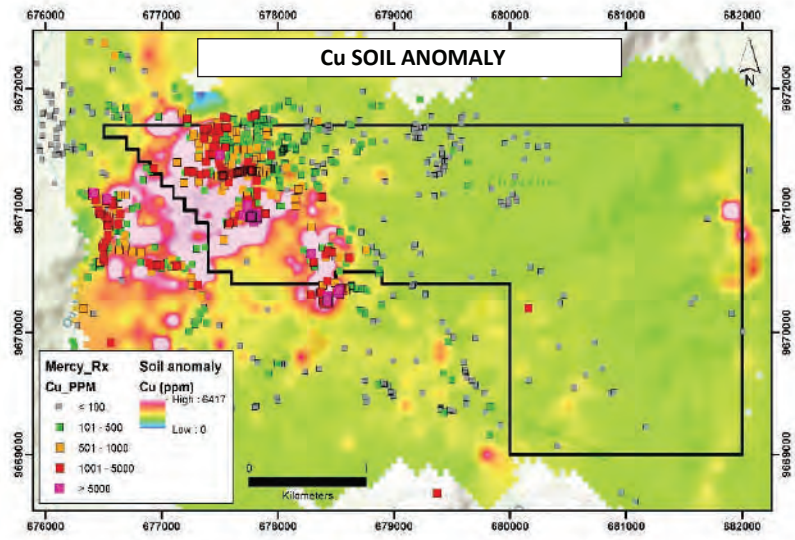
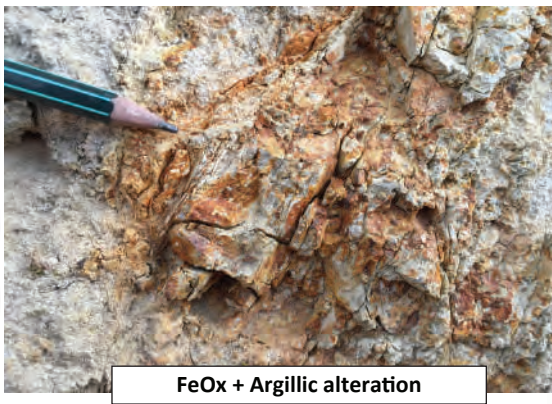
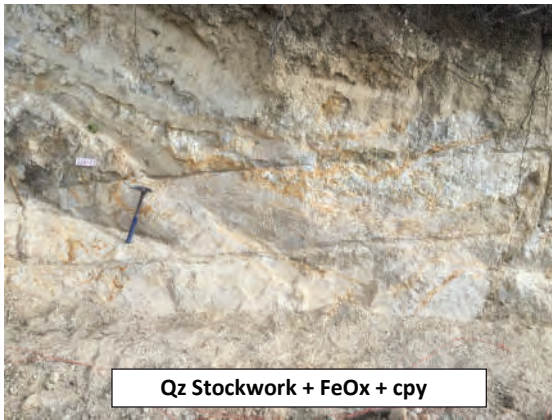
PIJILI PROJECT:

Cu-Au PORPHYRY SYSTEM WITH EPITHERMAL TARGET AREAS



MERCY DRILL HOLES

DDH	WIDTH	Au (g/t)	Cu (%)	Mo (ppm)	CuEq (%)
MERC-001	19	0.57	0.15	929	1.17*
MERC-002	143	0.05	0.23	92	0.32*
MERC-004	63	0.06	0.29	64	0.38*
MERC-008	28	0.16	0.19	19	0.35*
MERC-011	128	0.09	0.29	72	0.33*





Contact:

Email: ir@salazarresources.com

Phone: +1 604 685 9316

www.salazarresources.com



EL DOMO - RESOURCES

Open Pit Resources

Reserve Category	Tonnes (Mt)	Cu (%)	Pb (%)	Zn (%)	Au (g/t)	Ag (g/t)	Cu (kt)	Pb (kt)	Zn (kt)	Au (koz)	Ag (koz)
Proven	3.1	2.50	0.2	2.3	2.83	41	78.4	6.7	72.0	285	4,175
Probable	3.3	1.39	0.3	2.67	2.23	50	46.4	9.4	89.4	240	5,342
Proven + Provable	6.4	1.93	0.2	2.49	2.52	46	124.9	16.2	161.4	525	9,517

Notes: Majority of Proven and Probable Reserves within 40 to 80 m from surface.

Underground Resources

Resource Category	Tonnes (Mt)	Cu (%)	Pb (%)	Zn (%)	Au (g/t)	Ag (g/t)	Cu (kt)	Pb (kt)	Zn (kt)	Au (koz)	Ag (koz)
Indicated	1.9	2.72	0.14	2.38	1.37	31	51.9	2.6	45.4	84	1,895
Inferred	0.8	2.31	0.11	2.68	1.74	29	17.3	0.8	20.1	42	688

- Located 20 km from Pan-American highway, in low-lying hills (300 - ~900 masl), 3-hour drive from major port city of Guayaquil – key lands acquired for development, including 100% of resource areas.
- Medium scale mining concession titles granted for entire district for 25 years.
- JV Structure – Adventus funds 100% of the capital costs to production, receives 100% of first US\$30M in free cash flows & receives 95% of the free cashflow until all of its investments since October 2017 are repaid less the Salazar historical investment of US\$19.8M, after-which the project cashflows will be shared 75% Adventus & 25% Salazar – NPV ownership ratio: ~87:13 2.



•10 Mt @ 5% Cu Eq

Mineral Resources



- 737K oz Au
- 23Kt Pb
- 14870K Oz Ag
- 255Kt Zn
- 208K t Cu

Mineral Content



- 1850 tpd
- Open Pit 10 years
- Underground 5 years

Daily Production Estimated



- 10 years life of mine
- Taxes, Royalties & others
- US\$ 376 M
- 3000 Direct & Indirect Jobs

Taxes, royalties and employs estimated

Adventus Mining, Q3-2023.

EL DOMO - RESOURCES



Table 1a. Total Mineral Resources for El Domo, Curipamba Project - October 26,2021 (sum of table 1b and 1c)

Reserve Category	Tonnes (Mt)	Cu (%)	Pb (%)	Zn (%)	Au (g/t)	Ag (g/t)	Cu (kt)	Pb (kt)	Zn (kt)	Au (koz)	Ag (koz)
Mesaured	3.2	2.61	0.24	2.50	3.03	45	84.9	7.7	81.1	316	4,704
Indicated	5.7	1.83	0.24	2.64	1.98	45	104.5	13.9	150.6	364	8,265
M+I	9.0	2.11	0.24	2.59	2.36	45	189.4	21.6	231.7	680	12,969
Inferred	1.1	1.72	0.14	2.18	1.62	32	18.5	1.5	23.6	57	1,118

Table 1b. Pit Constrained Mineral Resource for El Domo, Curipamba Project - October 26,2021

Reserve Category	Tonnes (Mt)	Cu (%)	Pb (%)	Zn (%)	Au (g/t)	Ag (g/t)	Cu (kt)	Pb (kt)	Zn (kt)	Au (koz)	Ag (koz)
Mesaured	3.2	2.61	0.24	2.50	3.03	45	84.9	7.7	81.1	316	4,704
Indicated	3.8	1.38	0.30	2.77	2.29	52	52.6	11.3	150.6	280	6,370
M+I	7.1	1.95	0.27	2.64	2.63	49	137.5	19.0	186.3	596	11,074
Inferred	0.3	0.34	0.20	1.01	1.34	39	1.2	0.7	3.5	15	430

Table 2: Open-Pit Mineral Reserves Statement

Classification	Tonnage (kt)	Cu (%)	Pb (%)	Zn (%)	Au (g/t)	Ag (g/t)	Cu (kt)	Pb (kt)	Zn (kt)	Au (koz)	Ag (koz)
Mesaured	3,136	2.50	0.2	2.30	2.83	41	78.4	6.7	72.0	285	4175
Indicated	3,343	1.39	0.3	2.67	2.23	50	46.4	9.4	89.4	240	5342
M+I	6,478	1.93	0.2	2.49	2.52	46	124.9	16.2	161.4	525	9517

Notes:

1. Waste: Ore Strip Ratio 6.02: 1 not including pre-strip waste and 8.59: 1 including pre-strip waste
2. The effective date of the Mineral Reserve Estimate is October 22, 2021.
3. Mineral Reserves are reported in accordance with CIM Definition Standards (2014) and best practice guidelines (2019).
4. An NSR cut-off grade of US\$32.99 was used for all material.
5. Mineral reserves were estimated at a gold price of \$1,630/oz, a silver price of \$21.00/oz, a lead price of \$0.92/lb, a zinc price of \$1.16/lb, and a copper price of \$3.31/lb; they include modifying factors related to mining cost, dilution, mine recovery, process recoveries and costs, G&A, royalties, and rehabilitation costs.
6. Figures have been rounded to an appropriate level of precision for the reporting of Mineral Reserves.
7. Due to rounding, some columns or rows may not compute exactly as shown.
8. The Mineral Reserves are stated as dry tonnes processed at the crusher.

Table 1a. Total Mineral Resources for El Domo, Curipamba Project - October 26,2021 (sum of table 1b and 1c)

Reserve Category	Tonnes (Mt)	Cu (%)	Pb (%)	Zn (%)	Au (g/t)	Ag (g/t)	Cu (kt)	Pb (kt)	Zn (kt)	Au (koz)	Ag (koz)
Mesaured	1.9	2.72	0.14	2.38	1.37	31	51.9	2.6	45.4	84	1,895
Indicated	5.7	2.31	0.11	2.68	1.74	29	17.3	0.8	20.1	42	688

Notes:

1. CIM Definition Standards (2014) definitions were followed for Mineral Resources.
- Mineral Resources are reported above a cut-off NSR value of US\$29/t for Mineral Resources amenable to open-pit mining and the underground portion of the 2021 Mineral Resources are reported with mining shapes which were generated using a \$105/t NSR cut off value.
3. The NSR value is based on estimated metallurgical recoveries, assumed metal prices, and smelter terms, which include payable factors treatment charges, penalties, and refining charges.
4. Mineral Resources are estimated using the metal price assumptions: US\$4.00/lb Cu, US\$1.05/lb Pb, US\$1.30/lb Zn, US\$1,800/oz Au, and US\$24/oz Ag.
5. Metallurgical recovery assumptions were based on three mineral types defined by the metal ratio Cu/(Pb+Zn):
 - a) Zinc Mineral (Cu/(Pb+Zn) <0.33): 86% Cu, 90% Pb, 97% Zn, 68% Au and 78% Ag
 - b) Mixed Cu/Zn Mineral (0.335 Cu/(Pb+Zn) \$3.0): 86% Cu, 82% Pb, 95% Zn, 55% Au and 67% Ag
 - c) Copper Mineral (Cu/(Pb+Zn) >3.0): 80% Cu, 37% Pb, 36% Zn, 14% Au and 29% Ag
6. NSR factors were neral on the metal Pati /72):
 - a) Zinc Mineral (Cu/(Pb+Zn) <0.33): 53.41 US\$/% Cu, 7.99 US\$/% Pb, 13.47 US\$/% Zn, 30.91 US\$/g Au and 0.39 US\$/g Ag
 - b) Mixed Cu/Zn Mineral (0.335 Cu/(Pb+Zn) \$3.0): 58.99 US\$/% Cu, 7.05 US\$/% Pb, 13.41 US\$/% Zn, 25.12 US\$/g Au & 0.34 US\$/g Ag
 - c) Copper Mineral (Cu/(Pb+Zn) >3.0): 57.83 US\$/% Cu, 6.84 US\$/g Au and 0.19 US\$/g Ag
7. Bulk density interpolated on a block per block basis using assayed value, the correlation between measured density values and iron content, and base metal grade. The bulk densities range between 2.1 t/m' and 4.6 t/m' Mineral Resources are inclusive of Mineral Reserves.
- Mineral Resources that are not Mineral Reserves do not have demonstrated economic viability.
10. The underground portion of the Mineral Resources are reported within underground reporting shapes and include low grade blocks falling within the shapes.
11. QP is not aware of any environmental, permitting, legal, title, taxation, socio-economic, marketing, political, or other relevant factors that could materially affect the Mineral Resource estimate.
12. Numbers may not add due to rounding.

Notes: El Domo - Curipamba Feasibility Study Results (2021 10 26) see news release & SEDAR filed NI 43-101 Technical Report (2021 12 10), After-tax, long term price assumptions: \$3.50/lb Cu, \$1.20/lb Zn, \$1,700/oz Au, \$23/oz Ag, \$0.95/lb Pb, Underground expansion at PEA level of estimate (2021 10 26) see news release.

WORKING TOWARD 2030 SDGs

U.N. SUSTAINABLE DEVELOPMENT GOALS ARE INTEGRAL TO OUR WORK



Projects for the economic and social inclusion of the population in vulnerable situations:

- Livestock and Family farming projects.
- Supporting agricultural initiatives to improve family and community income.



Projects to strengthen family skills, social cohesion and use of free time:

- Football schools
- Capacity development process.
- Community leadership schools to strengthen social cohesion.
- Parent talks and schools: positive parenting, nutrition, life and work skills.



Technical assistance and processes to reduce emissions:

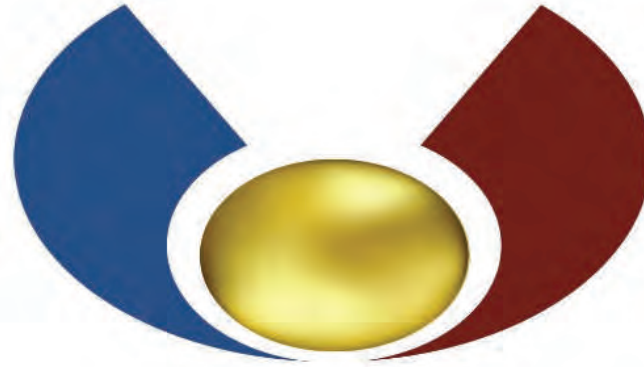
- Aiming to reduce carbon emissions
- Reforestation initiatives



Relationship strategy with international cooperation agencies, organizations and fundraising schemes.



Notes: ONU, 17 Goals to Transform Our World, 2023. <https://www.un.org/sustainabledevelopment/es/objetivos-de-desarrollo-sostenible/Q2-2025> ECUADOR'S PROVEN EXPLORER



SALAZAR
RESOURCES LTD.

www.salazarresources.com
